



# PHOENIX

## SPECIFICATIONS

**VIVID**

### PREMIUM SINK MIXER

PRODUCT CODE:	V736 CHR
FINISH:	CHROME
WELS:	7 STAR - 4.5 LT/MIN

#### INFORMATION:

MATERIAL:	BRASS
TEMPERATURE RATING:	MIN 1° - MAX 75°
PRESSURE RATING:	MIN 150 kPa - MAX 500 kPa

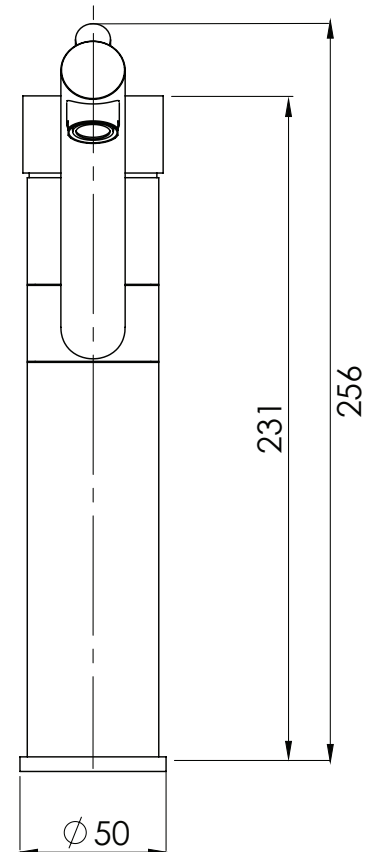
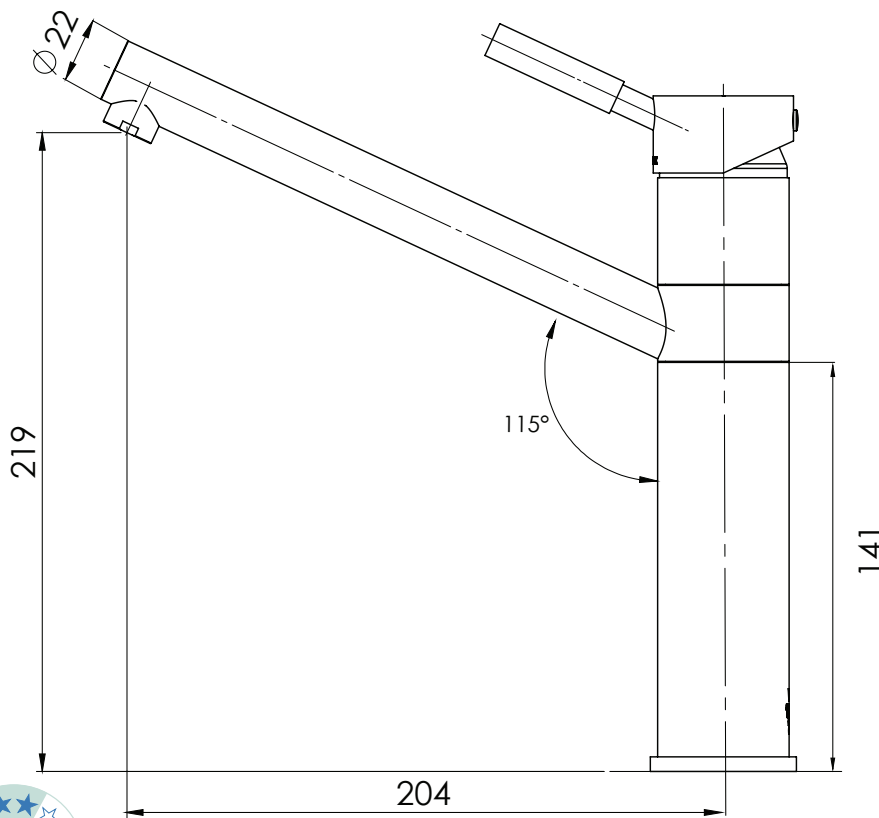


AVAILABLE IN:



CHROME

FOR MORE INFORMATION VISIT  
[www.phoenixtapware.com.au](http://www.phoenixtapware.com.au)



PLEASE [CLICK HERE TO VIEW FULL WARRANTY](#)

While we aim to ensure the specifications shown are correct at time of printing, Phoenix Tapware reserves the right to make modifications without prior notice. Always use the physical product measurements for mark-ups and roughing-in as the line drawing shown may differ from the actual product over time. All measurements are shown in millimetres.

[www.phoenixtapware.com.au](http://www.phoenixtapware.com.au)  
03 9780 4200



# PHOENIX

## SPECIFICATIONS

### VIVID

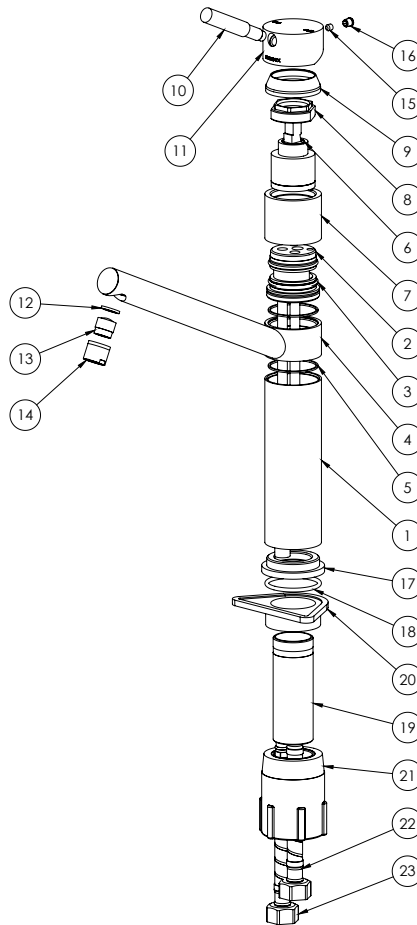
### PREMIUM SINK MIXER

PRODUCT CODE: V736 CHR  
 FINISH: CHROME  
 WELS: 7 STAR - 4.5 LT/MIN



#### PARTS LIST

1. MIXER BODY
2. CARTRIDGE SEAT
3. SEAT GASKET
4. MIXER SPOUT
5. NYLON RING
6. 35MM CARTRIDGE
7. MIXER BODY
8. LOCKNUT M3X1.5MM
9. MIXER DOME
10. PIN LEVER
11. MIXER HANDLE
12. AERATOR GASKET
13. AERATOR
14. AERATOR RETAINER
15. GRUB SCREW
16. SCREW CAP
17. DRESS PLATE
18. O-RING 39X30MM
19. MIXER TAIL
20. SWIVEL SPACER
21. LOCKNUT PLASTIC
22. FLEXIBLE HOSE 450MM HOT
23. FLEXIBLE HOSE 450MM COLD



#### MAINTENANCE AND CARE:

- All surfaces should be cleaned with mild liquid detergent or soap and water.
- Do not use cream cleaners or citrus based cleaning products, as they are abrasive.
- Use of unsuitable cleaning agents may damage the surface. Any damage caused in this way will not be covered by warranty.

#### PACKAGING INCLUDES

- 1 x Sink mixer
- 1 x 450mm braided flexible cold hose
- 1 x 450mm braided flexible hot hose
- 1 x Sink swivel spacer
- 1 x Mixer locknut plastic
- 1 x Installation instructions
- 1 x Warranty card

PLEASE [CLICK HERE](#) TO VIEW FULL WARRANTY

While we aim to ensure the specifications shown are correct at time of printing, Phoenix Tapware reserves the right to make modifications without prior notice. Always use the physical product measurements for mark-ups and roughing-in as the line drawing shown may differ from the actual product over time. All measurements are shown in millimetres.

[www.phoenixtapware.com.au](http://www.phoenixtapware.com.au)  
03 9780 4200