



PHOENIX

SPECIFICATIONS

VIVID

BASIN MIXER

PRODUCT CODE: V770 CHR
 FINISH: CHROME
 WELS: 5 STAR - 6 LT/MIN

INFORMATION:

MATERIAL: BRASS
 TEMPERATURE RATING: MIN 1° - MAX 75°
 PRESSURE RATING: MIN 150 kPa - MAX 500 kPa

CONSUMER UNIT:

SIZE: L 185MM x W 165MM x H 80MM
 GROSS WEIGHT: 1.3 KG
 BARCODE EAN-13: 9 320594 001 933

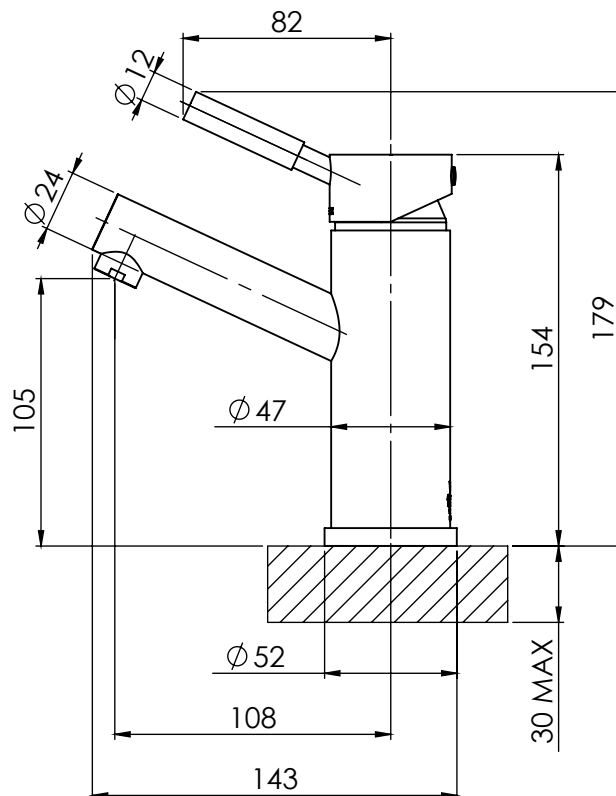


AVAILABLE IN:



CHROME

FOR MORE INFORMATION VISIT
www.phoenixtapware.com.au



PLEASE [CLICK HERE TO VIEW FULL WARRANTY](#)

While we aim to ensure the specifications shown are correct at time of printing, Phoenix Tapware reserves the right to make modifications without prior notice. Always use the physical product measurements for mark-ups and roughing-in as the line drawing shown may differ from the actual product over time. All measurements are shown in millimetres.

www.phoenixtapware.com.au
03 9780 4200



PHOENIX

SPECIFICATIONS

VIVID

BASIN MIXER

PRODUCT CODE:

V770 CHR

FINISH:

CHROME

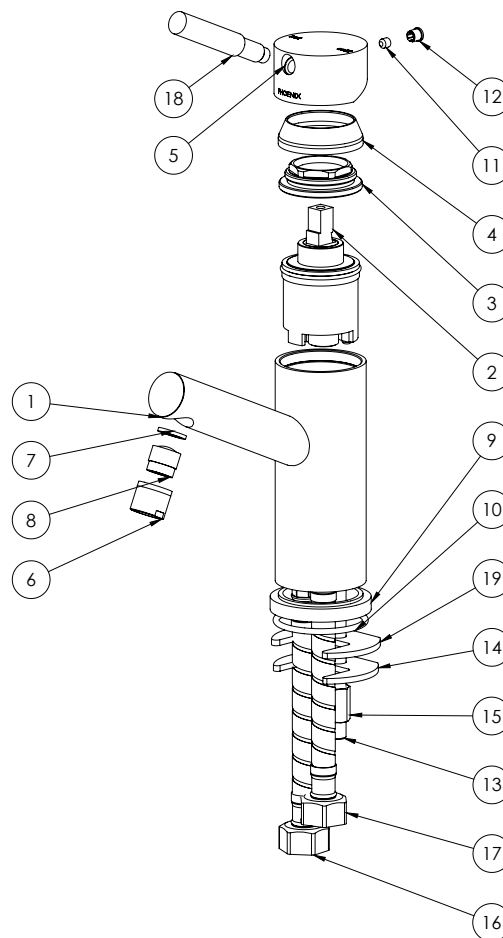
WELS:

5 STAR - 6 LT/MIN



PARTS LIST

1. MIXER BODY
2. 35MM CARTRIDGE
3. MIXER LOCKNUT
4. MIXER DOME
5. MIXER HANDLE
6. AERATOR RETAINER
7. AERATOR GASKET
8. AERATOR
9. DRESS PLATE
10. O-RING 43X3MM
11. GRUB SCREW M5X5
12. SCREW CAP M5
13. THREADED ROD M8X125MM
14. FIXING PLATE
15. THREADED NUT M8
16. FLEXIBLE HOSE 450MM HOT
17. FLEXIBLE HOSE 450MM COLD
18. PIN LEVER
19. RUBBER FIXING PLATE



MAINTENANCE AND CARE:

- All surfaces should be cleaned with mild liquid detergent or soap and water.
- Do not use cream cleaners or citrus based cleaning products, as they are abrasive.
- Use of unsuitable cleaning agents may damage the surface. Any damage caused in this way will not be covered by warranty.

PACKAGING INCLUDES

- 1 x Basin mixer
- 1 x Installation kit
- 1 x 450mm braided flexible cold hose
- 1 x 450mm braided flexible hot hose
- 1 x Installation instructions
- 1 x Warranty card

PLEASE [CLICK HERE](#) TO VIEW FULL WARRANTY

While we aim to ensure the specifications shown are correct at time of printing, Phoenix Tapware reserves the right to make modifications without prior notice. Always use the physical product measurements for mark-ups and roughing-in as the line drawing shown may differ from the actual product over time. All measurements are shown in millimetres.

www.phoenixtapware.com.au
03 9780 4200