



# PHOENIX

## SPECIFICATIONS

**VIVID**

### FLOOR MOUNTED BATH MIXER

PRODUCT CODE:	V799 CHR
FINISH:	CHROME
WELS:	N/A

#### INFORMATION:

MATERIAL:	BRASS
TEMPERATURE RATING:	MIN 1° - MAX 75°
PRESSURE RATING:	MIN 150 kPa - MAX 500 kPa

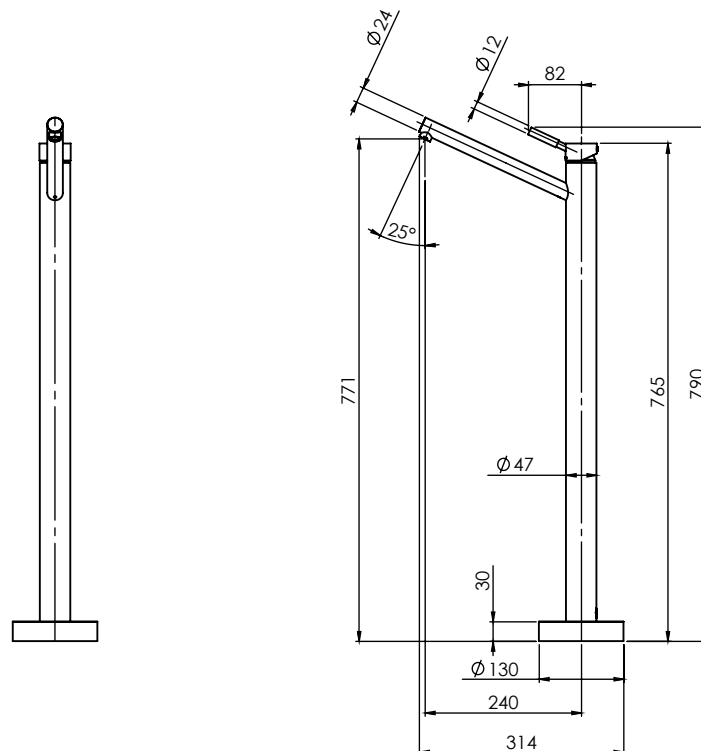


AVAILABLE IN:



CHROME

FOR MORE INFORMATION VISIT  
[www.phoenixtapware.com.au](http://www.phoenixtapware.com.au)



PLEASE [CLICK HERE TO VIEW FULL WARRANTY](#)

While we aim to ensure the specifications shown are correct at time of printing, Phoenix Tapware reserves the right to make modifications without prior notice. Always use the physical product measurements for mark-ups and roughing-in as the line drawing shown may differ from the actual product over time. All measurements are shown in millimetres.

[www.phoenixtapware.com.au](http://www.phoenixtapware.com.au)  
03 9780 4200



# PHOENIX

## SPECIFICATIONS

**VIVID**

### FLOOR MOUNTED BATH MIXER

PRODUCT CODE:

V799 CHR

FINISH:

CHROME

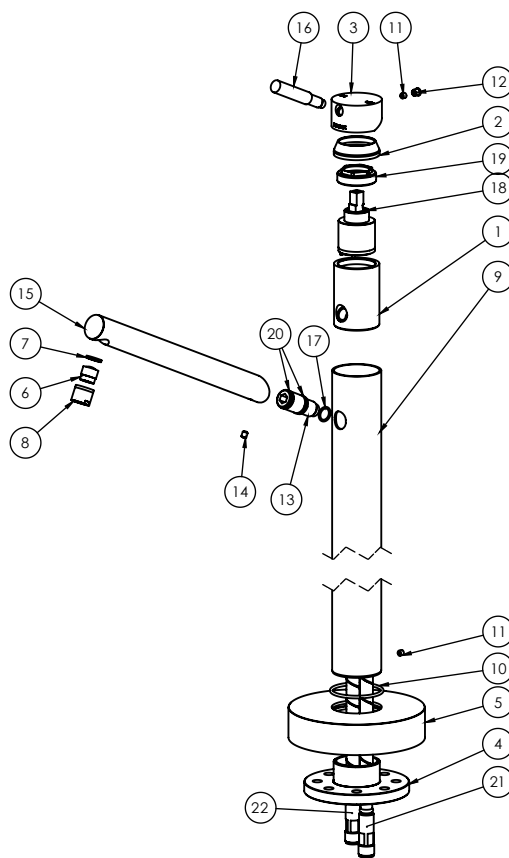
WELS:

N/A



#### PARTS LIST

1. MIXER BODY
2. MIXER DOME
3. MIXER HANDLE
4. MOUNTING DISC
5. MIXER COVER PLATE
6. AERATOR
7. AERATOR GASKET
8. AERATOR RETAINER
9. MAIN TUBE
10. O-RING 46X2.6MM
11. GRUB SCREW M5X5MM
12. SCREW CAP
13. MIXER SPIGOT
14. GRUB SCREW M5X6MM
15. MIXER SPOUT
16. PIN LEVER
17. O-RING 11X1.7MM
18. 35MM CARTRIDGE
19. MIXER LOCKNUT
20. O-RING 13X2.7MM
21. FLEXIBLE HOSE 710MM HOT
22. FLEXIBLE HOSE 710MM COLD



#### MAINTENANCE AND CARE:

- All surfaces should be cleaned with mild liquid detergent or soap and water.
- Do not use cream cleaners or citrus based cleaning products, as they are abrasive.
- Use of unsuitable cleaning agents may damage the surface. Any damage caused in this way will not be covered by warranty.

#### PACKAGING INCLUDES

- 1 x Floor mounted bath mixer
- 1 x Installation kit
- 1 x 450mm braided flexible cold hose
- 1 x 450mm braided flexible hot hose
- 1 x Installation instructions
- 1 x Warranty card

PLEASE [CLICK HERE](#) TO VIEW FULL WARRANTY

While we aim to ensure the specifications shown are correct at time of printing, Phoenix Tapware reserves the right to make modifications without prior notice. Always use the physical product measurements for mark-ups and roughing-in as the line drawing shown may differ from the actual product over time. All measurements are shown in millimetres.

[www.phoenixtapware.com.au](http://www.phoenixtapware.com.au)  
03 9780 4200