



PHOENIX

SPECIFICATIONS

VIVID PIN LEVER

BASIN SET SWIVEL SQUARELINE OUTLET

PRODUCT CODE: VPI00 CHR
 FINISH: CHROME
 WELS: 5 STAR - 5.5 LT/MIN

INFORMATION:

TEMPERATURE RATING: MIN 1° - MAX 75°
 PRESSURE RATING: MIN 150 kPa - MAX 500 kPa

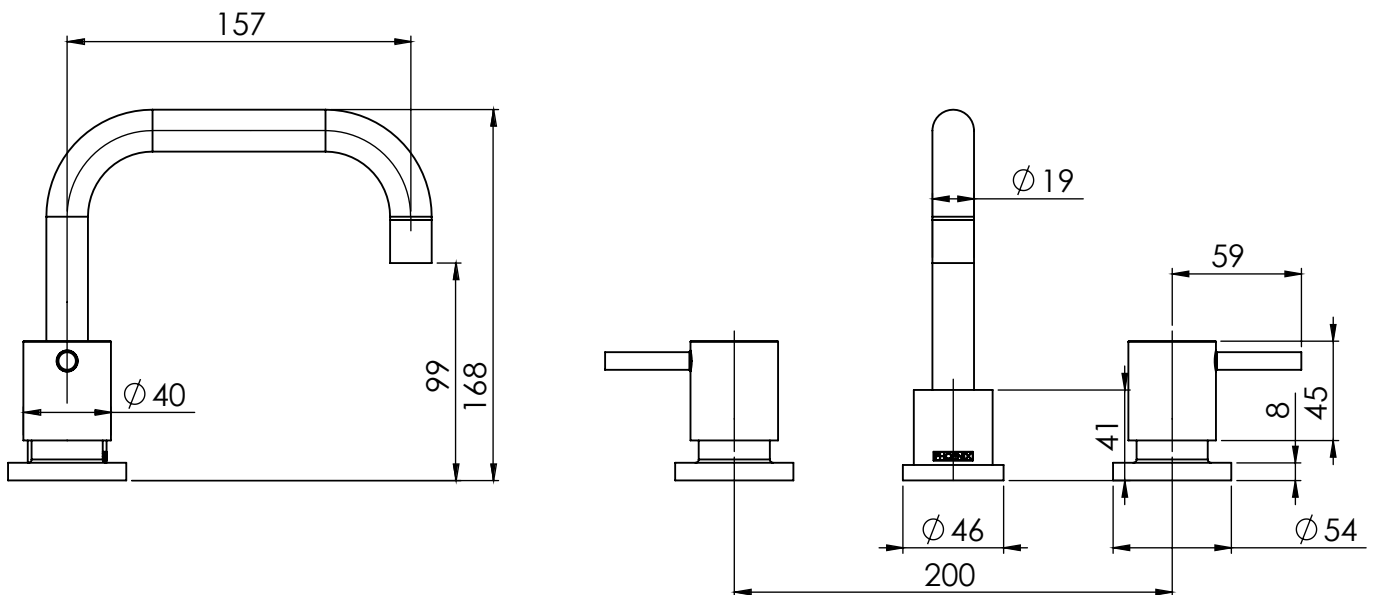


AVAILABLE IN:



CHROME

FOR MORE INFORMATION VISIT
www.phoenixtapware.com.au



PLEASE [CLICK HERE](#) TO VIEW FULL WARRANTY

While we aim to ensure the specifications shown are correct at time of printing, Phoenix Tapware reserves the right to make modifications without prior notice. Always use the physical product measurements for mark-ups and roughing-in as the line drawing shown may differ from the actual product over time. All measurements are shown in millimetres.

www.phoenixtapware.com.au
03 9780 4200



VIVID PIN LEVER

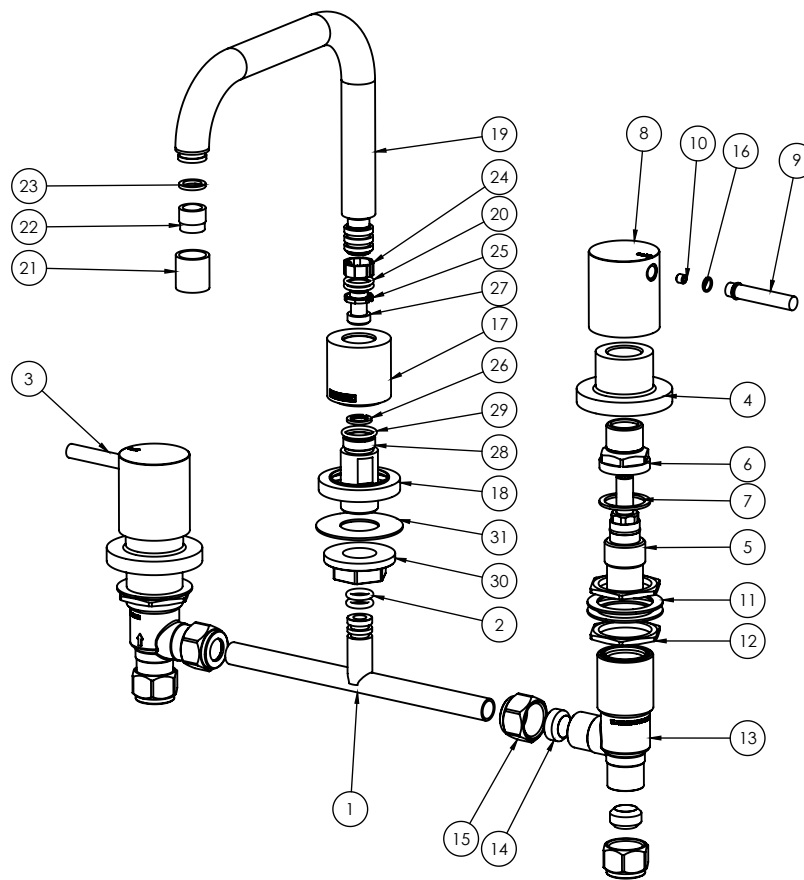
BASIN SET SWIVEL SQUARELINE OUTLET

PRODUCT CODE: VPI00 CHR
 FINISH: CHROME
 WELS: 5 STAR - 5.5 LT/MIN



PARTS LIST

1. BASIN T-PIECE
2. O-RING 10X2.75MM
3. PIN LEVER TOP SUBASSY
4. TAP FLANGE
5. 74MM CARTRIDGE
6. BONNET
7. FIBER WASHER
8. HANDLE BODY
9. PIN LEVER
10. GRUB SCREW M5X5
11. BODY WASHER
12. BASIN NUT
13. TAP BODY
14. CONNECTOR
15. T-PIECE LOCKNUT
16. O-RING 65X1.0MM
17. BASIN FLANGE
18. DRESS RING
19. SPOUT
20. O-RING 13X2.0MM
21. RETAINER
22. AERATOR
23. GASKET
24. SPOUT BEARING LARGE
25. SPOUT BEARING SMALL
26. SPOUT RETAINER WASHER
27. SPOUR RETAINER SCREW
28. OUTLET TAIL
29. O-RING 16X2MM
30. LOCKNUT PLASTIC
31. NYLON WASHER



MAINTENANCE AND CARE:

- All surfaces should be cleaned with mild liquid detergent or soap and water.
- Do not use cream cleaners or citrus based cleaning products, as they are abrasive.
- Use of unsuitable cleaning agents may damage the surface. Any damage caused in this way will not be covered by warranty.

PACKAGING INCLUDES

- 1 x Basin T-piece
- 1 x Spout
- 1 x Basin tap assembly
- 1 x Installation kit
- 1 x Installation instructions
- 1 x Warranty card

PLEASE [CLICK HERE](#) TO VIEW FULL WARRANTY

While we aim to ensure the specifications shown are correct at time of printing, Phoenix Tapware reserves the right to make modifications without prior notice. Always use the physical product measurements for mark-ups and roughing-in as the line drawing shown may differ from the actual product over time. All measurements are shown in millimetres.

www.phoenixtapware.com.au
 03 9780 4200