



PHOENIX

SPECIFICATIONS

VIVID PIN LEVER

WALL SINK SET SQUARELINE

PRODUCT CODE: VP815 CHR
 FINISH: CHROME
 WELS: 3 STAR - 8.0 LT/MIN

INFORMATION:

TEMPERATURE RATING: MIN 1° - MAX 75°
 PRESSURE RATING: MIN 150 kPa - MAX 500 kPa

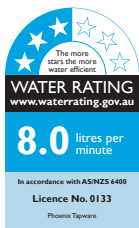
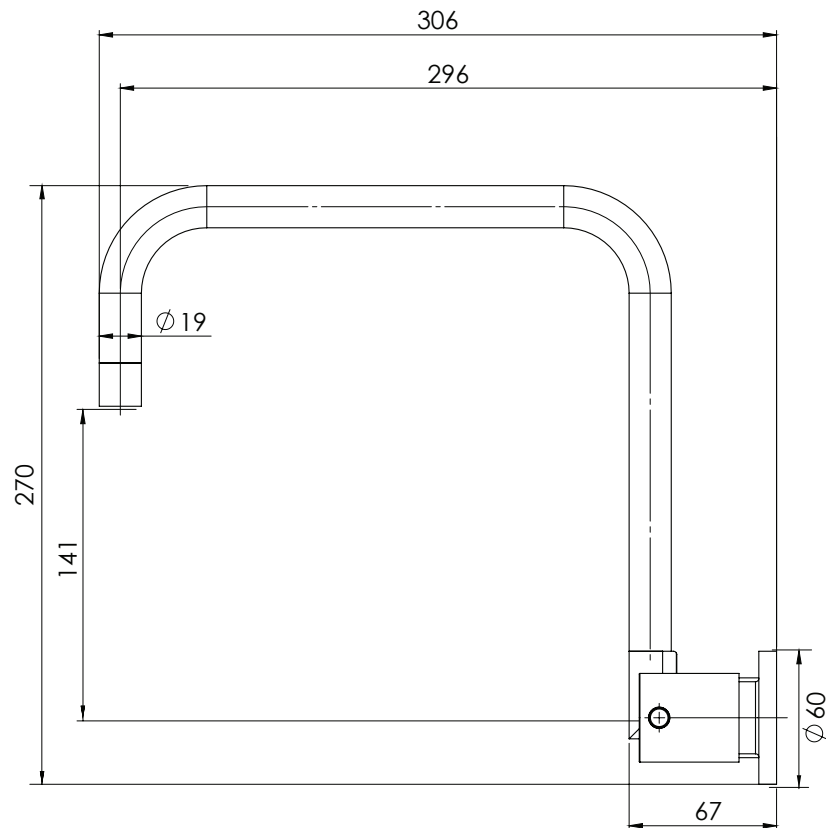


AVAILABLE IN:



CHROME

FOR MORE INFORMATION VISIT
www.phoenixtapware.com.au



PLEASE [CLICK HERE TO VIEW FULL WARRANTY](#)

While we aim to ensure the specifications shown are correct at time of printing, Phoenix Tapware reserves the right to make modifications without prior notice. Always use the physical product measurements for mark-ups and roughing-in as the line drawing shown may differ from the actual product over time. All measurements are shown in millimetres.

www.phoenixtapware.com.au
03 9780 4200



VIVID PIN LEVER

WALL SINK SET SQUARELINE

PRODUCT CODE:

VP815 CHR

FINISH:

CHROME

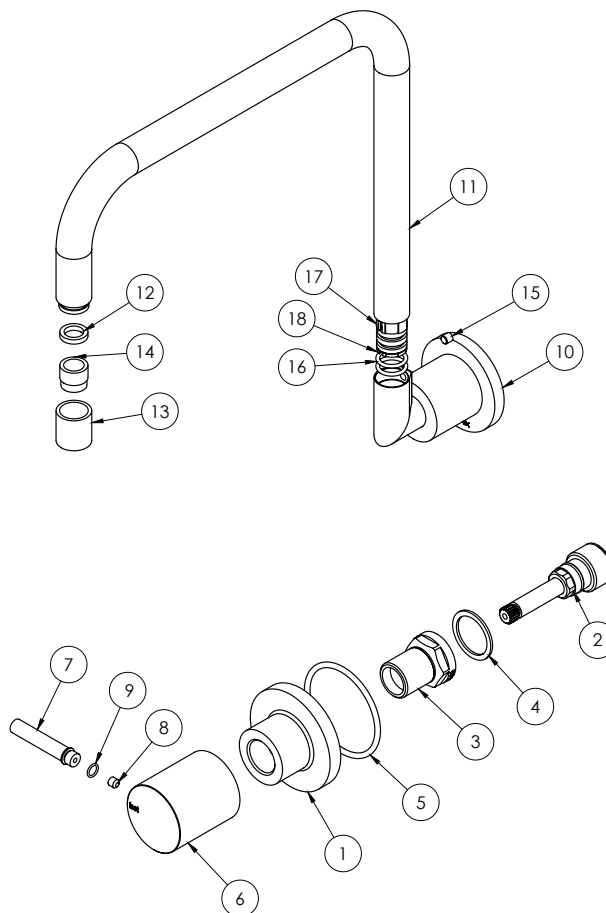
WELS:

3 STAR - 8.0 LT/MIN



PARTS LIST

1. WALL FLANGE
2. SPINDLE
3. BONNET
4. FIBER WASHER
5. O-RING 50X3.0
6. HANDLE BODY
7. PIN LEVER
8. GRUB SCREW M5X5
9. O-RING 6X1.0
10. FLANGE ELBOW
11. SPOUT
12. GASKET
13. NOZZLE RETAINER
14. AERATOR
15. GRUB SCREW M5X5
16. O-RING 13X2.0MM
17. SPOUT BEARING LARGE
18. SPOUT BEARING SMALL



MAINTENANCE AND CARE:

- All surfaces should be cleaned with mild liquid detergent or soap and water.
- Do not use cream cleaners or citrus based cleaning products, as they are abrasive.
- Use of unsuitable cleaning agents may damage the surface. Any damage caused in this way will not be covered by warranty.

PACKAGING INCLUDES

- 1 x Hot tap
- 1 x Cold tap
- 1 x Wall outlet
- 1 x Installation kit
- 1 x Installation instructions
- 1 x Warranty card

PLEASE [CLICK HERE](#) TO VIEW FULL WARRANTY

While we aim to ensure the specifications shown are correct at time of printing, Phoenix Tapware reserves the right to make modifications without prior notice. Always use the physical product measurements for mark-ups and roughing-in as the line drawing shown may differ from the actual product over time. All measurements are shown in millimetres.

www.phoenixtapware.com.au
03 9780 4200