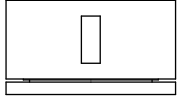
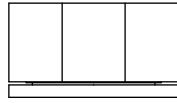


A81.05.O

WALL SET

[AVAILABLE WITH FLOW CONTROL, ADD **.FC** TO END OF CODE - 6 STAR/3.5Lpm WELS RATING]

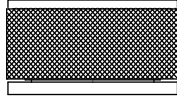
STANDARD WITH INDENT HANDLE
OTHER LEVER HANDLE OPTIONS



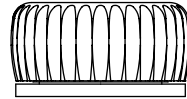
.V2 PIN HANDLE



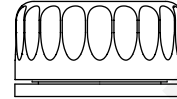
.V3 WHITE CARRARA MARBLE
.V4 BLACK MARQUINA MARBLE



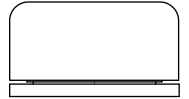
.V5 KNURLED



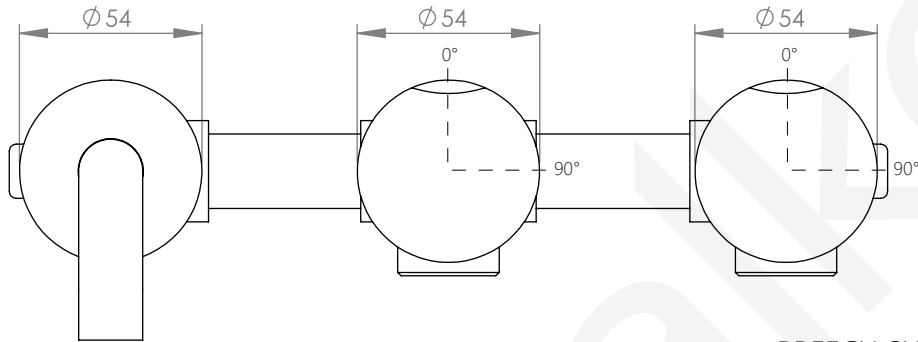
.V6 REEDED



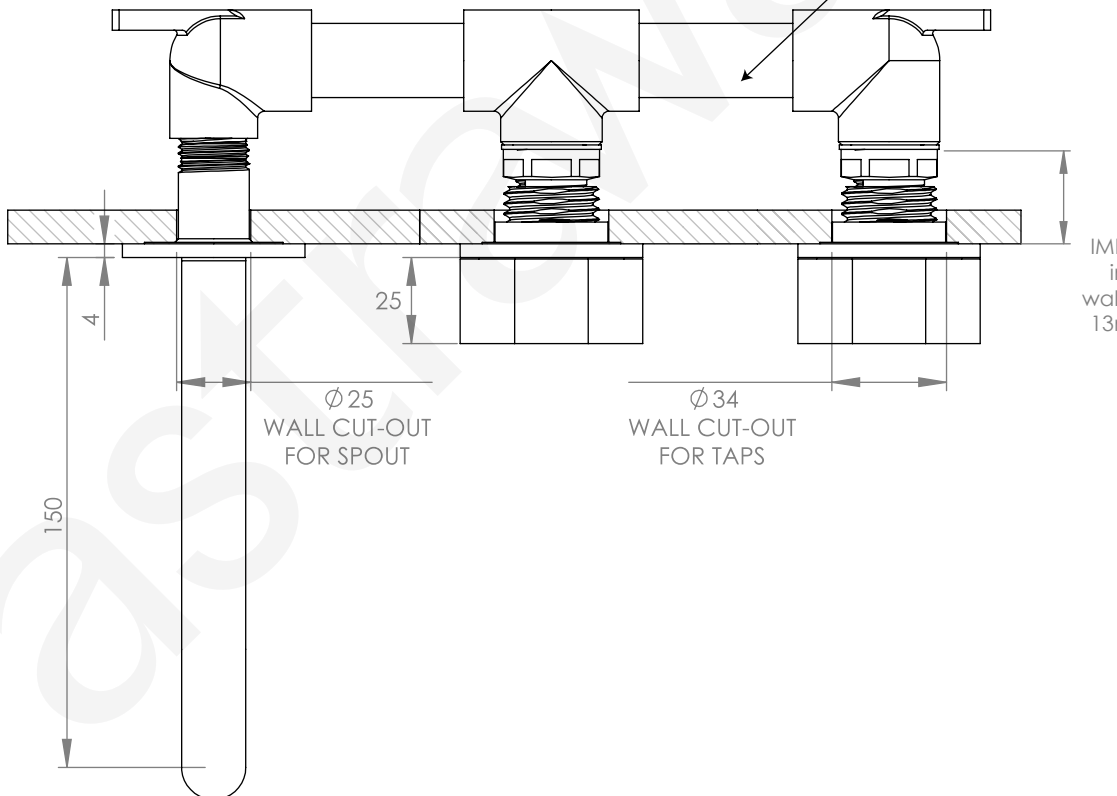
.V7 FLUTED



.V8 ROUND DIAL



BRECH SUPPLIED
BY OTHERS



27 MAX-13 MIN
IMPORTANT : Front face of
inwall body to finished
wall face must be minimum
13mm to maximum 27mm

NOTE : Seat of Brech Body extensions are NOT recommended in conjunction with this Tapware. Failure to adhere will void warranty.