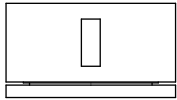
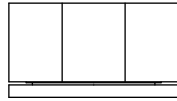


## A81.06

### WALL SET

[AVAILABLE WITH FLOW CONTROL, ADD **.FC** TO END OF CODE - 6 STAR/3.5Lpm WELS RATING]

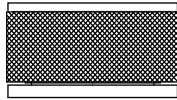
STANDARD WITH INDENT HANDLE  
OTHER LEVER HANDLE OPTIONS



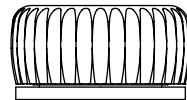
**.V2** PIN HANDLE



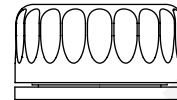
**.V3** WHITE CARRARA MARBLE  
**.V4** BLACK MARQUINA MARBLE



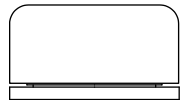
**.V5** KNURLED



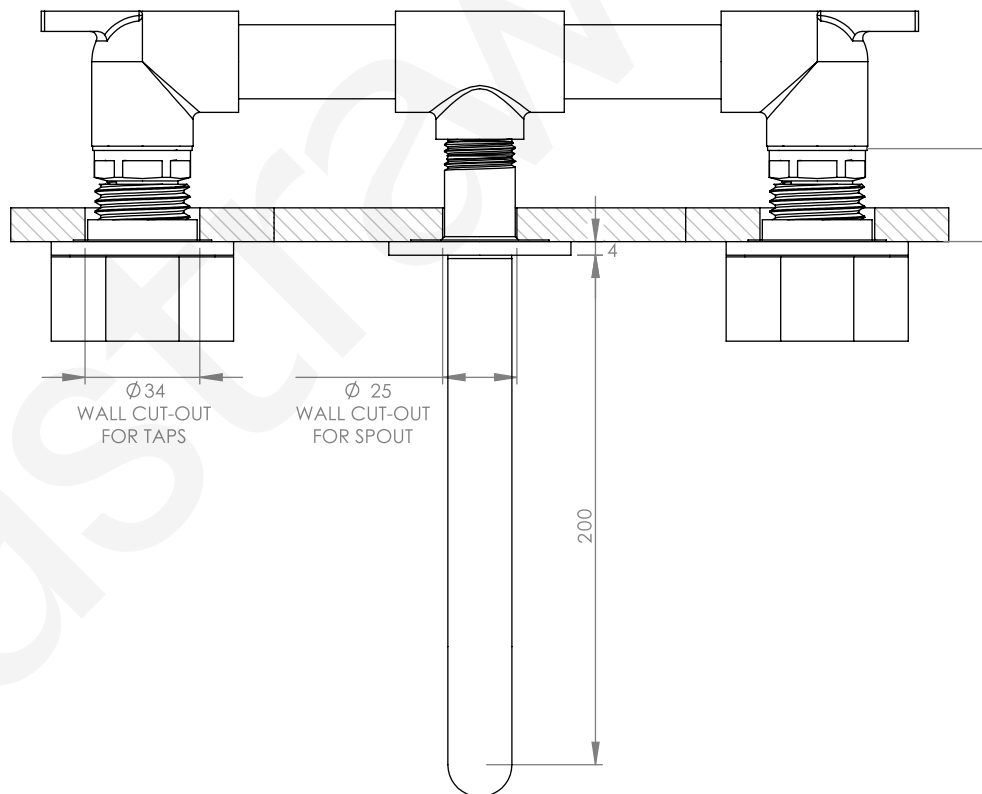
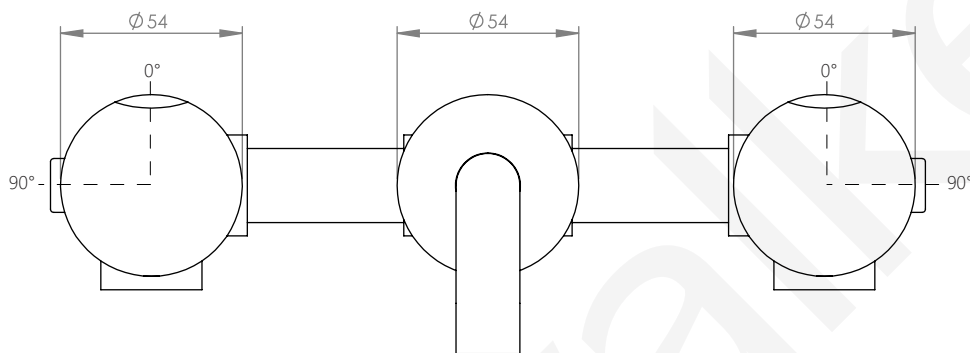
**.V6** REEDED



**.V7** FLUTED



**.V8** ROUND DIAL



27 MAX-13 MIN

IMPORTANT : Front face of  
inwall body to finished  
wall face must be minimum  
13mm to maximum 27mm

**NOTE** : Seat of Breech Body extensions are NOT recommended in conjunction with this Tapware. Failure to adhere will void warranty.